

"SO TELL ME AGAIN,  
WHY WAS IT THAT WE DE-  
CIDED TO CALL IT LOST GLOVE CAVE?"

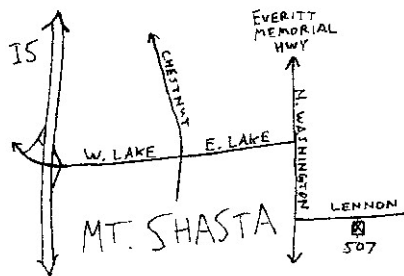
**INSIDE: Mt. Hood, Lost Glove, Brushy Hole, and Bears Bed**

The SAG RAG is published by the Shasta Area Grotto of the National Speleological Society. Grotto meetings are held at different locations on the fourth Friday of each month at 7:30 p.m. Meeting locations are announced in the SAG RAG. Membership dues are \$6 dollars per year and include newsletter subscription. Original material not otherwise noted is copyright to the SAG RAG. Such material may be copied with credit given to the author and the SAG RAG. For use outside of the caving community, please seek the permission of the author or editor first. Send material for publication any time to Bighorn Broeckel, 2916 Deer Meadows Road, Yreka, CA 96097 or <caverbill@live.com>. For more on SAG, check the web site at <<http://www.caves.org/grotto/sag>>.

## CAVER CALENDER 2012

Aug 14	Medicine Lake Highlands. Call Bighorn 530-905-0918.
Aug 24	SAG meeting 7:30 pm at Baxters 530-925-9077.
Aug 25	Grotto caving – Kangaroo Karst.
Aug 31	Packtrain to Speleocamp. Call Melanie 530-842-9714.
Sept 14-16	MLG to Lava Beds, SAG invited. Liz 530-964-3123.
Sept 28-30	Western regional – Hosted by the Stanislaus Grotto.
Oct 12	SAG meeting 7:30 pm at Wolffs in McCloud 530-964-3123.
Oct 13	SAG/SAR rescue training.
Oct 26	SAG meeting 7:30 pm at Kennedys in Weaverville (provisional date).
Dec 7	SAG meeting 7:30 pm with cookies? at?

### Map to Meeting – August



## SAG RAG SUMMARY

By Bighorn Broeckel

This summer is just flying by, and if you are looking for some chances to go caving in Northern California in milder conditions, this is a good place to look for such opportunities. Not too many newsletter articles coming by lately, but no worries. We can fill up a few pages with new maps of caves surveyed in times past. Liz Wolff brings us a nice map of Lost Glove Cave. It would make a good addition to Leaping Lizards if somebody could wiggle through the windy connections. Meanwhile it stands alone as another of the 100+ long caves of Siskiyou County surveyed over 1,000 feet. Brushy Hole and Bears Bed are two more Siskiyou caves that Russ Yoder showed us back in 2006 when he up and shared a whole new caving area that he found. Don't forget to check the July meeting minutes. Look under Trip Reports for Chris and Jed describing fun times inside a glacier on Mt. Hood.

**BB**

## SAG MEETING MINUTES July 27, 2012

The meeting was called to order at 8:30 pm at the Clifts' home in Big Bar, following a very nice, fun, and delicious barbecue supper catered by Vern and Linda Clift.

**Members present:** Jim & Liz Wolff (chair), Dennis & Kim Rechel, Lane Rechel, Luke Rechel, Jim Cork, Doreen Hill, Jake Owen, Vance Lutzi, Chris Kennedy, Jed Medin, Bill Broeckel, and Vern & Linda Clift. Note: some folks were a bit late.

**Minutes:** were not reviewed or corrected. **Treasurer's Report:** Not available.

**Website:** No report. **SAG RAG:** next issue soon – old caves without previously published maps. Next issue – Hat Creek report? **Correspondence:** none.

**Old Business:** Melanie Jackson still has openings for reserving gear space on a pack train to the Marbles Speleocamp Friday a.m., 8-31-12. One way cost for a half-animal load (up to 75 pounds, not too bulky) is \$62.50 + customary gratuity. If interested call Melanie **SOON** at (530) 842-9714 as she will be opening up the available spaces to others outside of Shasta Area Grotto.

**New Business:** Grotto meeting cave trip tomorrow (7-28-12) planned for Natural Bridge (Kok-Chee-Shup-Chee) near Hayfork AND environs. Also, see calendar.

**Trip Reports:** Chris Kennedy and Jed Medin reported on a great cave trip into some glacier caves on Mt. Hood. They had photos on computer and this became a special feature of the meeting. This exploration area was recently opened up to the Western Region at Speleo-Ed last Spring, and Chris and Jed went for it. The expedition was supported by the NSS, under USFS approval, and after some grant and fund-raising activity. The dates of the expedition were July 6-12, 2012).

**Day#1:** A large group of cavers hauled – 1,500 pounds of stuff up the mountain, about 6 miles to the target glacier, some 5-6 hours of heavy work. Camp was at about 6,500 ft elevation. Some ice probing was done for Snow Dragon Cave. Next days: More probing was done to locate caves. Snow Dragon was entered. Previously surveyed upper passages were toured for orientation. Some hazards were identified including low temperatures, lots of cold water coursing through, unstable, shifting floors, rock slides, quick sand, and rocks melting through the glacier and falling out of the ceiling. Pure Imagination Cave was entered via a 150-ft rappel down walls of hard ice and running water. A half dozen people dropped in, but then the rope was cut by a falling rock, and no further persons entered. A phone line was established for communications. Chris went upstream with the geologist to sample base rock for studies of the mountain, and later ascended the entry route. Jed went on the downstream exploration, down climbing and rappelling along very loud, slick cascading water. The glacial cave portion transitioned into windy "firn tubes". A blue light streak in the ceiling revealed surface proximity. The group sent back a messenger, and started a very cold process of digging out. Others assisted from the surface, and soon a small lower entrance was established, amazingly close to camp. The entrance "mullin" was up glacier at about 7,000 ft elevation, so cave depth is in the 500-ft range at least. A mullin is a hole where melt water drills into the glacier. Jed was near hypothermic when he emerged, so he lay on some rocks in the sun to warm up like a lizard, and experienced the "screaming barfys" as his numb hands painfully came back to normal life.

**Next day:** This was survey day. Scott Linn ran the survey. Chris helped with about 1/2 mile of survey in the upper glacier portion of Pure Imagination. Jed served as model for some 106 gigs of digital photography by a cave photographer named Brent, until Brent's wetsuit ripped open, filled with cold water, and they had to leave the cave when they became overly chilled.

**Next day:** Chris continued on Scott's mapping team, and they surveyed the firn tube connecting Pure Imagination to Snow Dragon. Jed went on an exploration foray, sump diving into a third cave, the biggest of them all so far, and eventually they had to self-rescue.

continued

**Next day:** Before hiking out, Chris and Jed went ice climbing out of the Mullin in wetsuits at 0300 a.m. Jed got cold hands and screaming barfys again, but says "we had so much fun." They were safe back home again by 0500 a.m. the following morning. Other highlights of the trip included sleeping on a pedestal, as the glacier was evaporating from around the tent. The glacier surface goes down about a foot per day in the summer sun. They were able to spend time with Neil Marchington and other good cavers, and members of Portland's rescue crew. They saw the northern lights. The caves were awesome, and probably all connect into one giant cave of ice. Watch for further reports on this exciting and original western cave exploration in other publications soon.

Jim & Liz Wolff visited a local ice cave that no longer has ice in it.

Bill Broeckel went to Lava Beds on the July 6-8, 2012 CRF expedition and led a survey trip to Golden Glob Cave, and helped on the re-survey of Paradise Alleys. Others on the expedition included Jim & Liz Wolff, Bill Devereaux, Ed Bobrow, Pat Helton, Bruce Rogers, Judy Broeckel, Matt Leissring, Heather McDonald, Glenn Hasbrouck, Marc Hasbrouck, and Kaedean Dopplemeyer. Bill Broeckel also reports on some trips to GPS entrances in the Medicine Lake area, relocating some such as big Ben Franklin Cave, and digging out rocks to make a way into the lower ice level in another lava cave.

Meeting adjourned at 9:40 p.m.

Minutes respectfully submitted by Bill Broeckel standing in for Grotto Secretary Melanie Jackson. **BB**

### **Lost Glove Cave** Siskiyou County, California

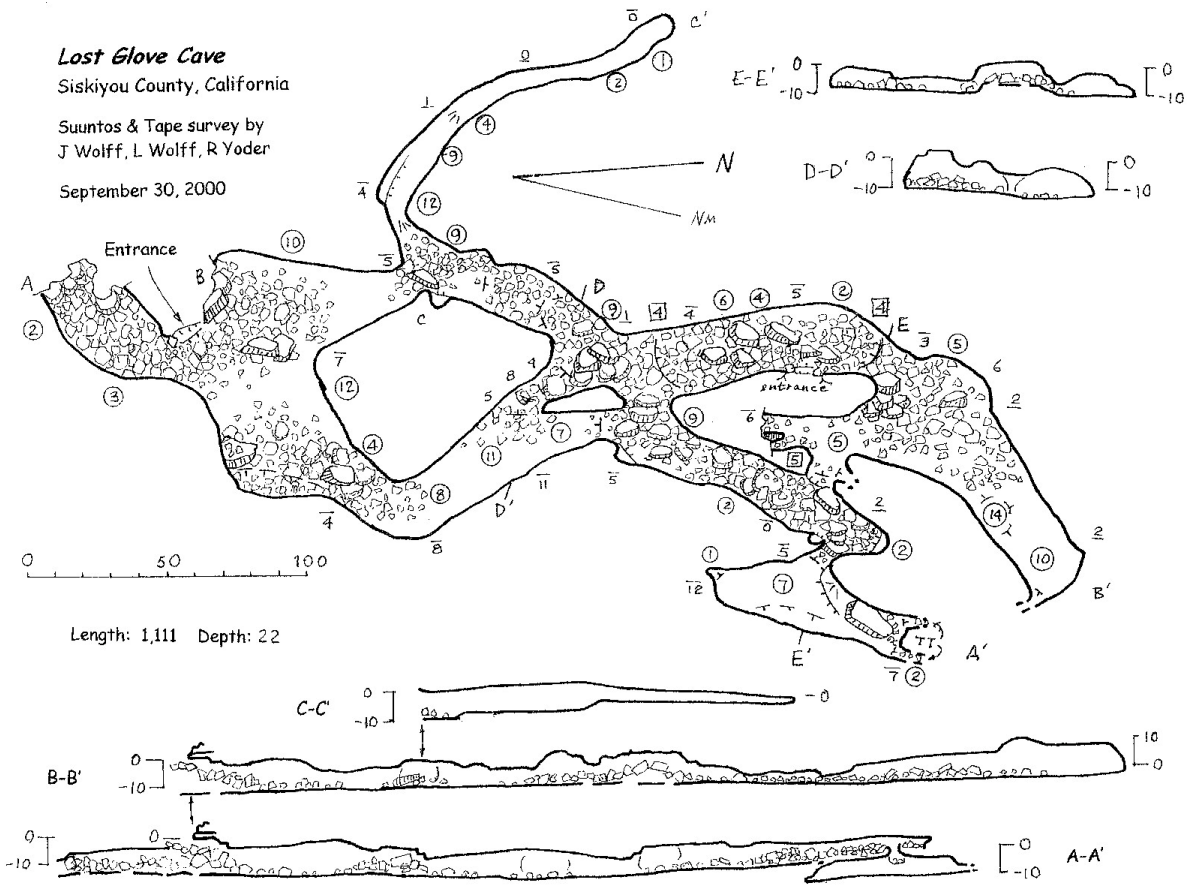
**By L. Wolff**

Why this cave map was never finished, and why there was no trip report for the cave is beyond me at this point, 11 + years later, but a cave map and description is missing from the data base and the SAG RAG index of caves. Checking my file of reduced survey data and the files of cave maps revealed that nothing had been done with the data. So here, at long last, is a finished map and report cobbled together from notes in my survey book.

Lost Glove Cave is located on the edge of an aa band in the Chimney Crater lava flow in the southern Medicine Lake Highlands. Russ Yoder had found the cave in the summer of 1998 or 99. A small crew of Jim Wolff, Liz Wolff and Russ went out to survey in September of 2000. The cave is named for a glove that fell into the breakdown and, while visible, was irretrievable. There are two entrances, both nearly covered by aa. What is interesting is that the entrances are on opposing sides of a narrow aa band. Near the unusable back entrance, tight and unstable, we noted a frog and a rat midden.

Lost Glove, as noted in the survey book, is a damp and gritty cave and mostly filled with breakdown. The passages are wide and spacious, if not too tall in some areas. It seemed we climbed over endless mountains of boulders, crawled through low-ceilinged rubble piles and had a very few areas of intact passage. We passed around several pillars during the survey, confusing us as to where we were exactly.

continued



Map: Lost Glove Cave

Russ suspected that the breakdown blocked crawl at the end of the lowest intact room would connect with Leapin' Lizards Cave, just to the north of Lost Glove. Plotting the two caves together showed that the tight, nearly blocked ends of each cave are about 12 feet apart. Unlike so many lava tube caves, the magnetics were no problem with survey closures, in this case each loop had a closure error of less than a half foot. Many or rather, most lava caves have closure errors of multiple feet mainly due to the magnetic properties of the rock.

LW

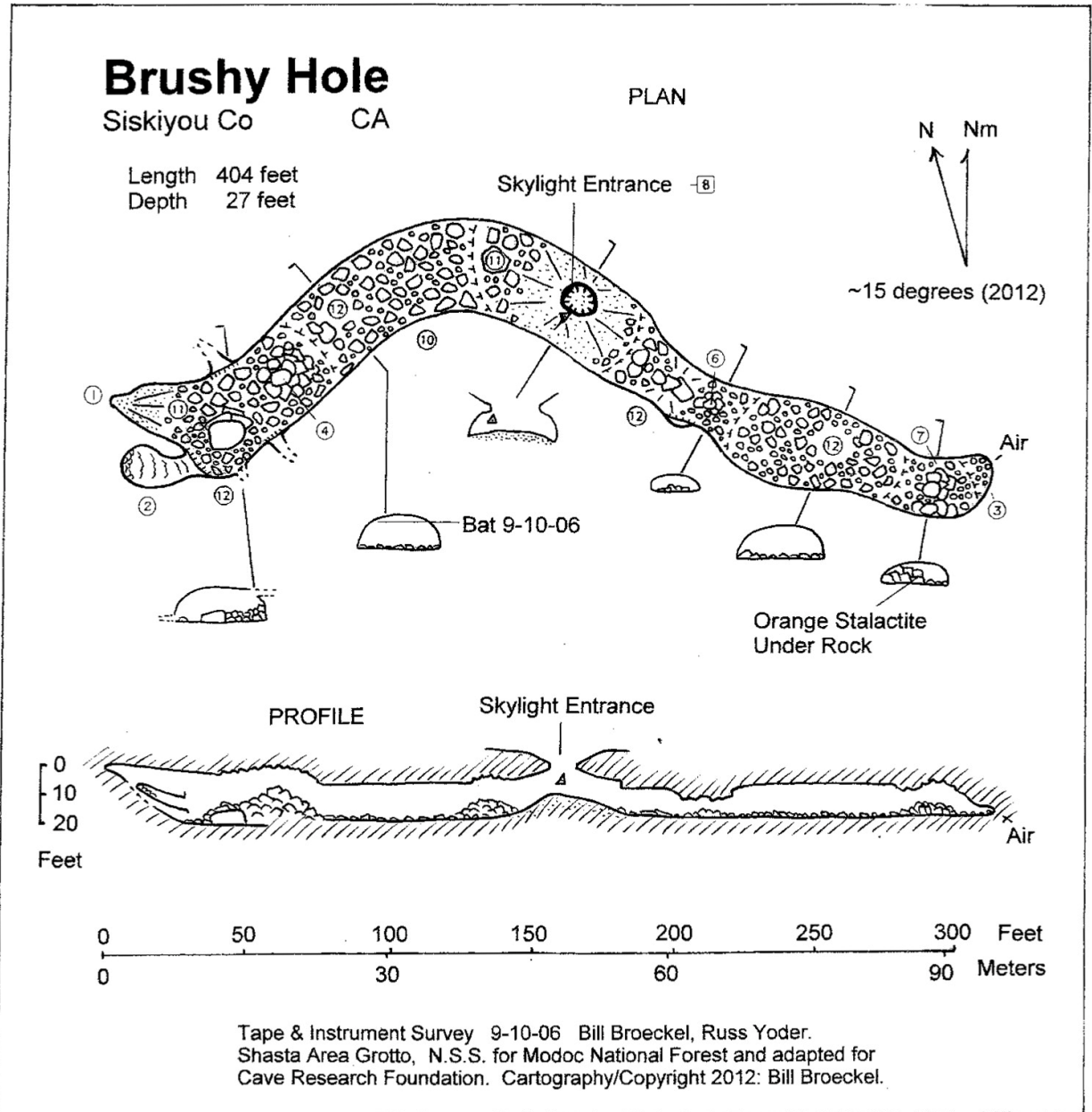
## **BRUSHY HOLE**      **By Bighorn Broeckel**

Way out in a flat land covered with manzanita thickets there is a sandy depression where the bottom drops out. This skylight is the only way into Brushy Hole, and it overhangs on all sides. The drop is a short one and pays off with access to a nice segment of linear walking passage in a big lava tube. The entire floor is covered with breakdown. The entrance is positioned about midway along the segment. There are some short but interesting original side passages near the west end.

Russ Yoder found and named this cave. He rigged the skylight with his cable ladder the day he showed it to the Grotto and we scooped it on 9-9-06. We left the ladder in place, and the next day Russ and I returned to survey the cave. I'm sorry it took so long to get this map done, but here it is now with a cave length of 404 feet. **BB**



Russ Yoder comes back out of the best side passage, the cave within the cave, at the west end of Brushy Hole.  
Photo by Bill Broeckel on 9-10-96.



Map: Brushy Hole Cave

**BEARS BED CAVE      By Bighorn Broeckel**

After we finished Brushy Hole, we still had some time, so Russ tracked down this other cave nearby in a grove of pine trees. There is a discreet entrance at the base of a rock slope, just big enough for a bear. There was a nice sheltered burrow near the entrance that looked to be a likely ursine hibernation site, hence the name for the cave. Broad, ducking passage went deeper into the cave, which next dropped down a broken rock pitch to reach a sandy floor area. Here the cave lowers down so that the tops of the sand dunes begin tickling the ceiling, creating an odd, wet sandy maze. Soon the cave essentially ends with the sand fill. This cave was also surveyed on 9-10-06 with a total length of 134-ft.

Russ tells us about another cave around there called Cougar Den Cave. Apparently he saw a very large mountain lion associated with the location, and so far nobody has been real anxious to hunt down this other cave. It has been 6 years now, so far, but at least Bears Bed is finally done. Grizzly Adams would be proud. **BB**



Entrance to Bears Bed Cave on the survey day.  
Photo by Bill Broeckel on 9-10-06.



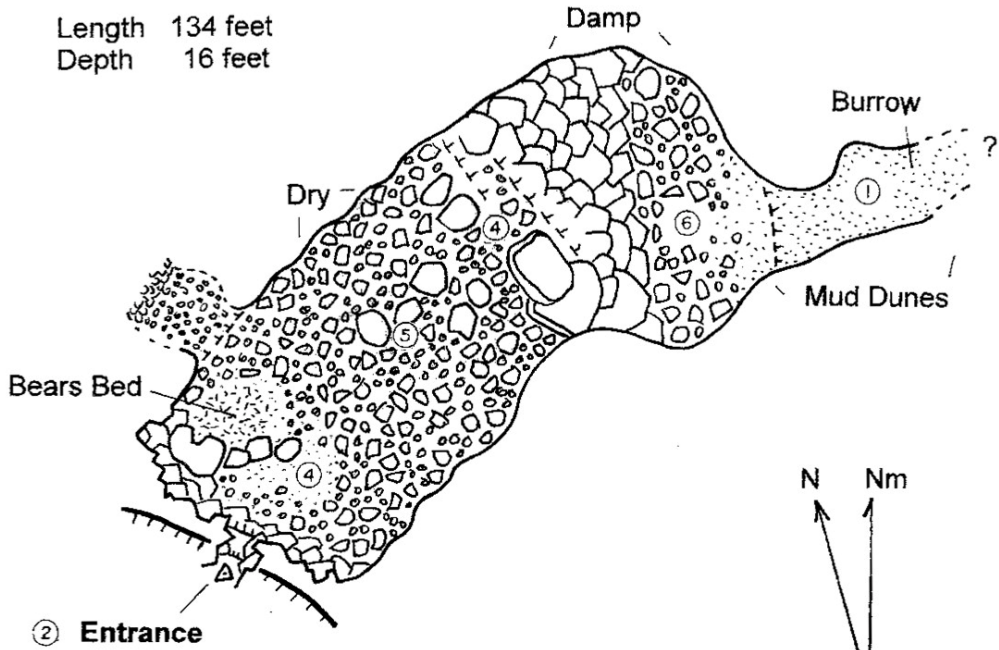
# Bears Bed Cave

Siskiyou Co

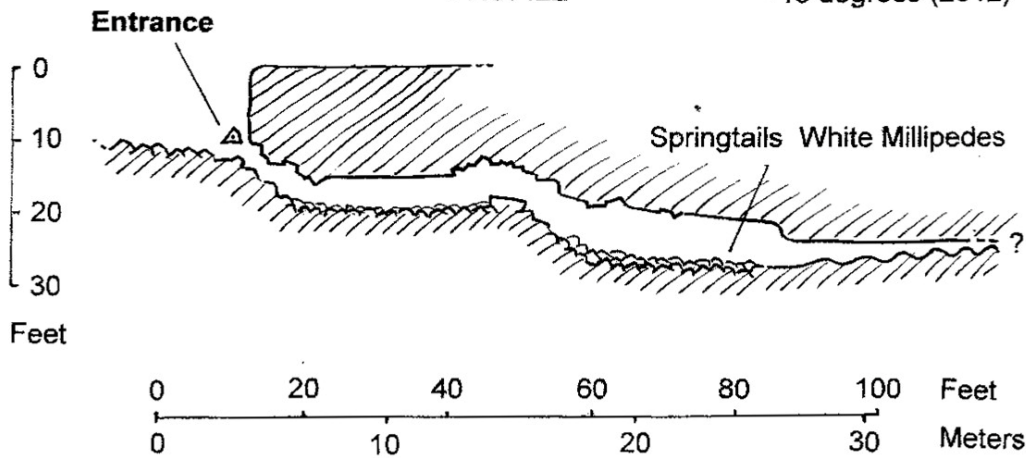
CA

PLAN

Length 134 feet  
Depth 16 feet



PROFILE



Tape & Instrument Survey 9-10-06 Bill Broeckel, Russ Yoder.  
Shasta Area Grotto, N.S.S. for Modoc National Forest and adapted for  
Cave Research Foundation. Cartography/Copyright 2012: Bill Broeckel.

Map: Bears Bed Cave



LOST GLOVE: Single, but not too old, pretty little garden glove, left-handed; looking for a perfect match, right-handed, must be willing to enter caves.

**SAG RAG**  
2916 Deer Mdws. Rd.  
Yreka CA 96097

**STAMP**

**TABLE OF CONTENTS**

**TO:**

Page 1	Lost Glove cartoon – B. Broeckel
Page 2	Calendar and Summary
Page 3	July meeting minutes – B. Broeckel
Page 4	Lost Glove Cave – Liz Wolff
Page 6	Brushy Hole – B. Broeckel
Page 8	Bears Bed Cave – B. Broeckel